

Port Dalrymple School Home-Area

General Information

At present, schools are using school Home-Area Maps that were created in 2005.

Following the decision by Cabinet in April 2012 to accept the recommendations of the School Viability Reference Group, work has commenced on progressing Recommendations 1-3 from that report.

Recommendations 1 and 2 seek the department to review the Enrolment and Attendance Guidelines, and current policies and guidelines relating to school boundaries and catchment areas. Stakeholders indicated that the current documentation was out-dated and interpreted in different ways by schools, parents and the public.

The primary aim of the analysis of Home-Area Maps was to increase the percentage of students attending their local school. The following principles were used to guide this work:

- Students will attend the school in their local Home-Area
- Each primary school will have a defined Home-Area.
- Each primary school will be linked to a local high school.

Application of the following criteria will determine home-areas:

- current school building infrastructure and current utilisation
- student current home address and current student enrolment data
- recent school closures and amalgamation decisions
- road and transport infrastructure
- distance of home address to local school
- natural geographic boundaries

The following process has been used to develop the proposed maps for schools:

- 2011 first term census information was geocoded, mapped, researched and analysed; then a proposed map was created based upon the criteria outlined above;
- This process was repeated with the 2012 first term census information and comparisons made between the two data sets
- This data and proposed maps were presented to the Home-Areas Reference Group in July 2012 and were further map refinement was undertaken after this meeting.

The department also reviewed the way the map information was presented and has produced cleaner, simpler maps. The department has also produced Google maps of the home-areas which will allow school communities to view the details of the maps using Google Earth.

School Specific Information

From investigating the Present Home-Area Map it was noted North and North-East of George Town had more homes attending Port Dalrymple School than South George Town Primary School.

There are more homes in the Stony Head and Lulworth area attending South George Town Primary than Port Dalrymple School. On closer observation of the 2012 data and road maps it showed that the main roads from Stony Head and Lulworth connect with Bridport Road and the trend of the majority of homes attending South George Town Primary splits at William Street and not York Rivulet.

It is suggested that the Port Dalrymple/South George Town boundary be moved to the bridge on Soldiers Settlement Road down towards Curries Dam Road and in towards William Street; and that this be recommended in the new Home-Area Map.

2011 Present Area Summary Data

Nominated School	Port Dalrymple
Staying In Area	223
Total Students	305
Percentage In Area	73.1%

NB: Total does not count students attending Special Schools

2011 Proposed Area Summary Data

Nominated School	Port Dalrymple
Staying In Area	233
Total Students	327
Percentage In Area	71.3%

NB: Total does not count students attending Special Schools

2012 Present Area Summary Data

Nominated School	Port Dalrymple
Staying In Area	235
Total Students	318
Percentage In Area	73.9%

NB: Total does not count students attending Special Schools

2012 Proposed Area Summary Data

Nominated School	Port Dalrymple
Staying In Area	221
Total Students	314
Percentage In Area	70.4%

NB: Total does not count students attending Special Schools

2013 First Term Census Enrolment Data: 521

Estimated student capacity: 750

This data is compiled from enrolment information provided by schools to the department and the first term census data. It shows where students who live in the current Home-Area attend school.

2011 Schools of Primary Students Living In Present Port Dalrymple School Home-Area

Campus_Name	KK	PP	01	02	03	04	05	06	Total
Port Dalrymple School	31	24	25	27	33	23	26	34	223
South George Town Primary School	11	13	13	8	9	8	9	6	77
Youngtown Primary School				1		1	1		3
Northern Support School								1	1
Tasmanian eSchool						1			1
Moonah Primary School						1			1
Ringarooma Primary School			1						1
Total	42	37	39	36	42	34	36	41	307

Based on this enrolment information and using the criteria outlined on the first page, adjustments have been suggested to Home-Area Maps. This has resulted in the following changes to the data:

2011 Schools of Primary Students Living In Proposed Port Dalrymple School Home-Area

Campus_Name	KK	PP	01	02	03	04	05	06	Total
Port Dalrymple School	32	27	25	29	36	25	28	31	233
South George Town Primary School	12	13	14	10	9	7	11	10	86
Youngtown Primary School				1		1	1		3
Northern Support School								1	1
West Launceston Primary School		1							1
Tasmanian eSchool						1			1
Ringarooma Primary School			1						1
Mowbray Heights Primary School				1					1
Moonah Primary School						1			1
Lilydale District School					1				1
Total	44	41	40	41	46	35	40	42	329

This data is compiled from enrolment information provided by schools to the department and the first term census data. It shows where students who live in the current Home-Area attend school.

2012 Schools of Primary Students Living In Present Port Dalrymple School Home-Area

Campus_Name	KK	PP	01	02	03	04	05	06	Total
Port Dalrymple School	35	34	25	29	29	35	21	27	235
South George Town Primary School	8	11	11	11	7	14	7	10	79
Youngtown Primary School					1				1
West Launceston Primary School						1			1
Tasmanian eSchool							1		1
Ringarooma Primary School				1					1
Beaconsfield Primary School		1							1
Total	43	46	36	41	37	50	29	37	319

Based on this enrolment information and using the criteria outlined on the first page, adjustments have been suggested to Home-Area Maps. This has resulted in the following changes to the data:

2012 Schools of Primary Students Living In Proposed Port Dalrymple School Home-Area

Campus_Name	KK	PP	01	02	03	04	05	06	Total
Port Dalrymple School	32	33	26	27	27	31	21	24	221
South George Town Primary School	8	12	11	13	7	14	7	11	83
West Launceston Primary School			1			1			2
Brighton Primary School				1				1	2
Beaconsfield Primary School	1	1							2
Youngtown Primary School					1				1
Trevallyn Primary School						1			1
Tasmanian eSchool							1		1
Ringarooma Primary School				1					1
Mowbray Heights Primary School					1				1
Total	41	46	38	42	36	47	29	36	315

This data is compiled from enrolment information provided by schools to the department and the first term census data. It shows where students who live in the current Home-Area attend school.

2011 Schools of Secondary Students Living In Present Port Dalrymple School Home-Area

Campus_Name	07	08	09	10	Total
Port Dalrymple School	28	34	34	28	124
Brooks High School		2	1	1	4
KMHS - Kings Meadow Campus				1	1
Northern Support School		1			1
Tasmanian eSchool		1			1
Cape Barren Island School	1				1
Northern Support School - Newstead Campus			1		1
Total	29	38	36	30	133

Based on this enrolment information and using the criteria outlined on the first page, adjustments have been suggested to Home-Area Maps. This has resulted in the following changes to the data:

2011 Schools of Secondary Students Living In Proposed Port Dalrymple School Home-Area

Campus_Name	07	08	09	10	Total
Port Dalrymple School	28	36	30	30	124
Brooks High School		1	1	1	3
Northern Support School		1			1
Northern Support School - Newstead Campus			1		1
KMHS - Kings Meadows Campus				1	1
Cape Barren Island School	1				1
Total	29	38	32	32	131

This data is compiled from enrolment information provided by schools to the department and the first term census data. It shows where students who live in the current Home-Area attend school.

2012 Schools of Secondary Students Living In Present Port Dalrymple School Home-Area

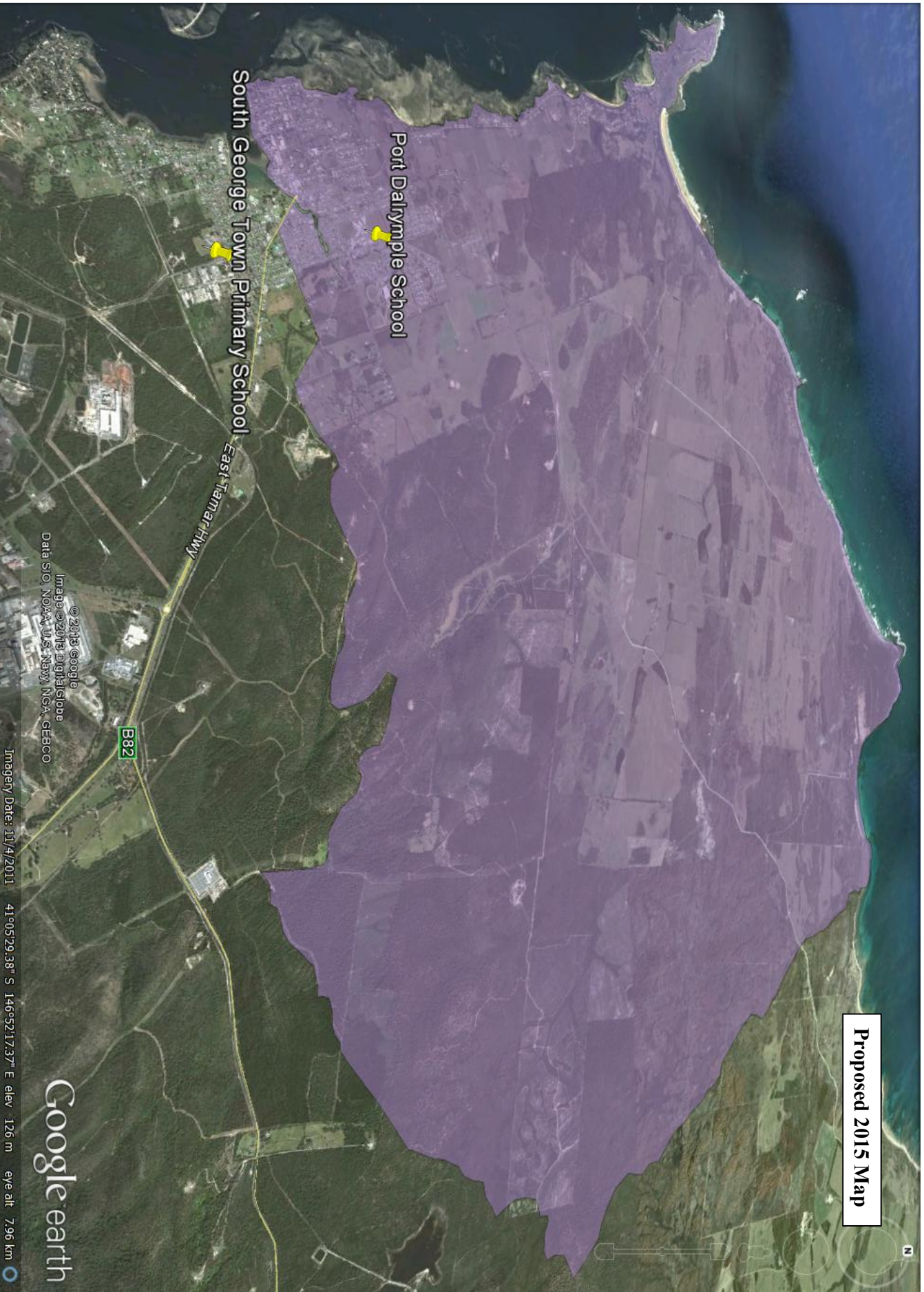
Campus_Name	07	08	09	10	Total
Port Dalrymple School	36	29	32	36	133
Tasmanian eSchool			2	1	3
Brooks High School		1	1	1	3
Northern Support School	1		1		2
Northern Support School - Newstead Campus			1		1
KMHS - Kings Meadow Campus			1		1
Clarence High School		1			1
Total	37	31	38	38	144

Based on this enrolment information and using the criteria outlined on the first page, adjustments have been suggested to Home-Area Maps. This has resulted in the following changes to the data:

2012 Schools of Secondary Students Living In Proposed Port Dalrymple School Home-Area

Campus_Name	07	08	09	10	Total
Port Dalrymple School	34	26	30	32	122
Northern Support School	1		1		2
Brooks High School		1	1		2
Tasmanian eSchool				1	1
Riverside High School	1				1
Northern Support School - Newstead Campus			1		1
KMHS - Kings Meadow Campus		1			1
Clarence High School		1			1
Ashley School			1		1
Total	36	29	34	33	132

Proposed 2015 Map



Port Dalrymple School

South George Town Primary School

East Tanna Hwy

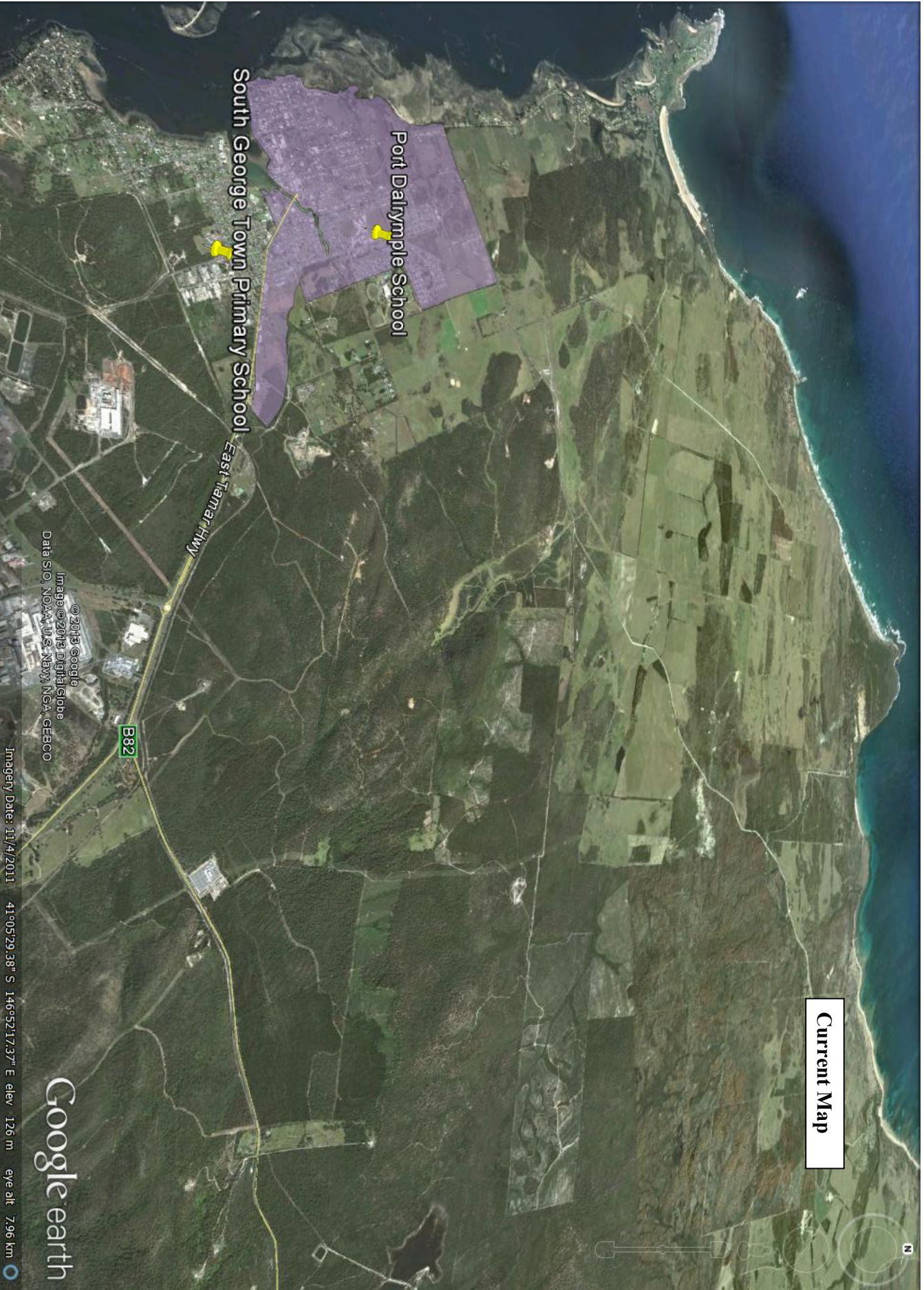
B82

© 2013 Google
Image © 2013 DigitalGlobe
Data SIO, NOAA, U.S. Navy, NGA, GEBCO

Imagery Date: 11/4/2011 41°05'29.58" S 146°52'17.37" E elev 126 m eye alt 7.96 km

Google earth

Current Map



© 2013 Google
Image © 2013 DigitalGlobe
Data SIO, NOAA, U.S. Navy, NGA, GEBCO

Imagery Date: 11/4/2011 41°05'29.58" S 146°52'17.37" E elev 126 m eye alt 7.96 km

Google earth